

PRODUCT BROCHURE

Relay[®]Pro TaperFit

Designed to Fit, Built to Last

Expand your Choice: TaperFit



Unparalleled Range
Portfolio includes 2,224
FDA-approved configurations
beyond the standard portfolio.



Precise Fit
Better accommodate your
patients' anatomy and treatment.



Meets Clinical Needs
Treatments with a broad range of
dimensions.



Order Planning Solution
Allows ordering and stocking as
needed for urgent needs.

TRUSTED FEATURES

All TaperFit devices have the same trusted features as the standard Relay®Pro



**Low-Profile
Delivery System**



**Pre-curved
Nitinol
Inner Catheter**



**Dual Sheath
Technology**



**Asymmetrical
Proximal
Claspings,
Support Wires
and Flared End***

* NBS delivery system features.

| | Standard | TaperFit |
|--------------------------|----------------------------------|---|
| Configurations | Bare & NBS | Bare & NBS |
| Straight diameters | 22* – 46mm (2mm increments) | 22* – 46mm (2mm increments) |
| Tapered options | 4mm Regular | 2 – 18mm Regular & Reverse (2mm increments) |
| Straight lengths | 100 – 250mm (50mm increments) | 90 – 250mm (~20mm increments) |
| Tapered lengths | 150 – 250mm (50mm increments) | 90 – 250mm (~20mm increments) |
| Available Configurations | 164 | 2224 |

*22mm diameter stent grafts are only approved to treat traumatic aortic injuries (Transections)

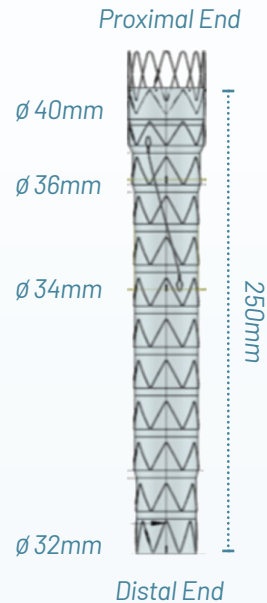
Clinical Cases

1 Regular Taper

PRE-OPERATIVE



STENT GRAFT

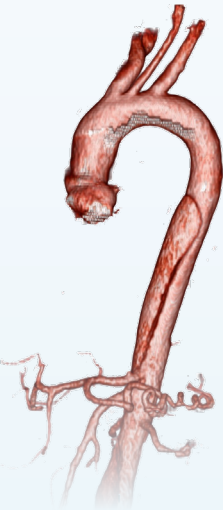


POST-OPERATIVE

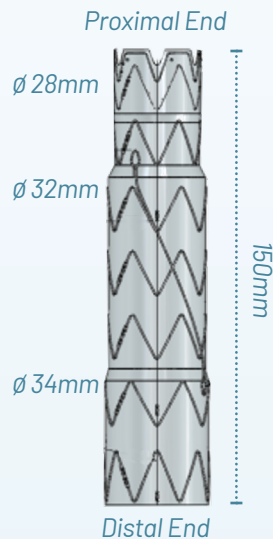


2 Reverse Taper

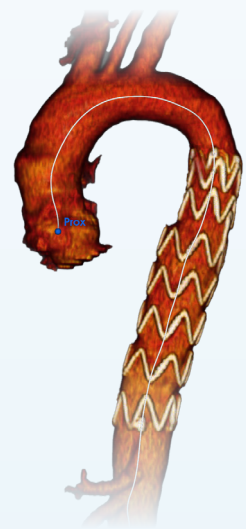
PRE-OPERATIVE



STENT GRAFT



POST-OPERATIVE



“The opportunity to tailor the stent-graft system to precisely match the anatomy of the patient was hugely valuable as it allowed me to accommodate a big gap of the proximal and distal diameters with a single device.”³

1. Case images courtesy of Dr. Mohiuddin Cheema, Hartford Hospital, Connecticut

2. Case images courtesy of Dr. Mazin Foteh, Heart Hospital of Austin, Texas

3. Mazin Foteh MD, Vascular Surgeon, Heart Hospital of Austin, Texas <https://evtoday.com/news/terumo-aortics-relaypro-upon-request-program-commercially-launched>

Committed to Aortic Care



Discover solutions for every segment of the aorta
[terumo-aortic.com](https://www.terumo-aortic.com)



LinkedIn



VuMedi



X



View IFU at eifu.terumo-aortic.com for more information on use, indications, contraindications and warnings/precautions.

Product availability subject to local regulatory approval.

PM-09585

For distributor information, visit
[terumo-aortic.com/contact](https://www.terumo-aortic.com/contact)

 Bolton Medical Inc.
799 International Parkway, Sunrise,
Florida 33325, USA