

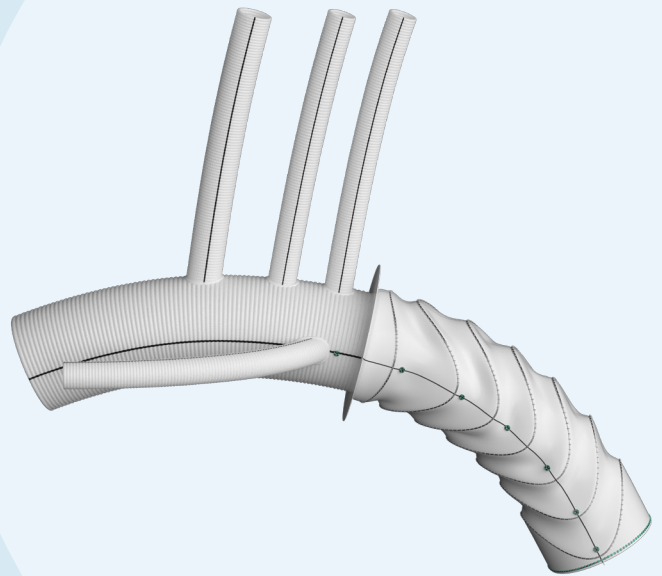


ADAPTABILITY AND VERSATILITY

USA 

thoraflex™ **hybrid**

Conforming Arch
Surgery to the
Gold Standard



For more information, visit
terumoarctic.com/features-benefits

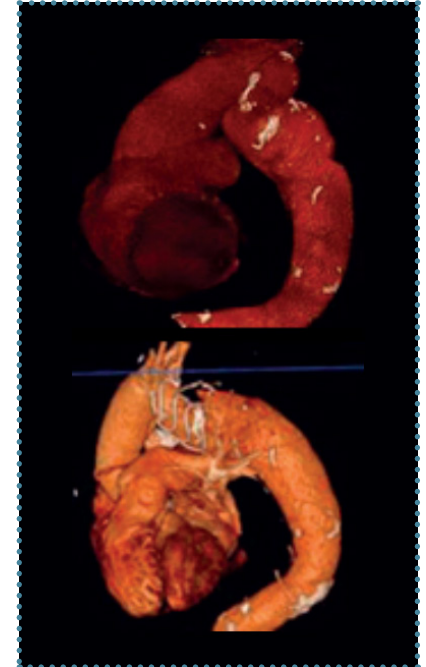
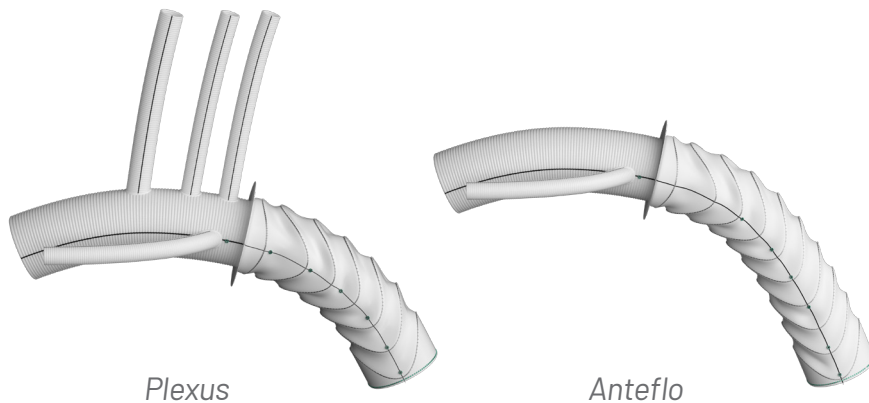
TERUMO
Aortic



Gold Standard, Empowering Possibilities

Adaptable to Complex Arch Pathologies

- ▶ The different combinations of available graft diameters, branch configurations, stent diameters and stent lengths allow treatment of various anatomy and disease morphologies with regards to length and diameter
- ▶ Anteflo and Plexus Configurations for Thoraflex™ Hybrid offer options to adapt to the needs of the patient's anatomy



Pre and post-operative 3D rendered CT images demonstrating FET positioning in the tortuous aortic arch ¹

“Conventional TEVAR stent grafts were never designed to negotiate the curvature of the aortic arch and thus, have had recurrent problems with unstable proximal fixation, distal migration, and type 1A endoleaks. However, the Thoraflex graft has a surgically sewn proximal end which nearly eliminates the risk of type 1A endoleaks. Additionally, the unique nitinol ringed stent design also allows the graft to sit well within the native aortic arch, through most angulations.” ²

1. Harrington, et al. 2020. Thoraflex™ Hybrid in a double wire technique – The technical challenges of Frozen Elephant Trunk in severe Aortic tortuosity. (Case report within Terumo Aortic files).
2. Chu et al. 2019. Early Clinical Outcomes of Hybrid Arch Frozen Elephant Trunk Repair With the Thoraflex Hybrid Graft. Ann Thorac Surg;107:47–53)

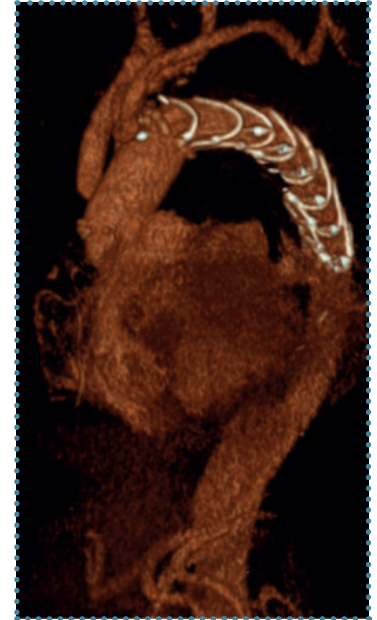
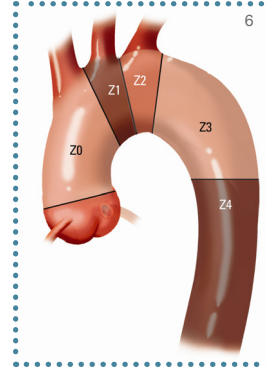


Gold Standard, Tailored Precision

Versatility of Choice

- ▶ 40 Thoraflex™ Hybrid size options
- ▶ Versatile Aortic Treatment across zones 0 to 4
- ▶ Comprehensive range of Gelweave™ Debranching Grafts

“Modern concepts of aortic arch surgery combine the FET technique with proximalization of the distal anastomosis in arch zone 2 or further proximal, achieved by using different debranching techniques.”³



Thoraflex™ Hybrid graft with the distal stent deployed in Zone 0 and individual rerouting of the neck vessels⁴

Gelweave™

Pioneering the Future Confident Aortic Repair

Built with precision, you can trust in Gelweave for the confidence to confront the challenges of aortic repair. Visit terumo-aortic.com/gelweave, to find out more.



“Branch-first total aortic arch repair allows continuous antegrade cerebral perfusion and shortens distal organ and cardiac ischemic time, with unobstructed access to the full extent of the diseased aortic arch.”⁵

3. Brickwedel et al. 2023. Analysing debranching techniques in Frozen Elephant Trunk procedures: a narrative literature review. Cardiovasc Diagn Ther, 13: 427–439.
 4. Giordano et al. 2018. The Thoraflex™ Hybrid approach using a Zone 0 proximal landing site for a complicated Acute type B Dissection. (Case report within Terumo Aortic files).
 5. Kim et al. 2020. Technique and rationale for branch-first total aortic arch repair. JCVS Techniques; 4C:1-4.
 6. Image provided courtesy of Wilson Y. Szeto, MD



Discover solutions for every segment of the aorta
[terumo-aortic.com](https://www.terumo-aortic.com)

