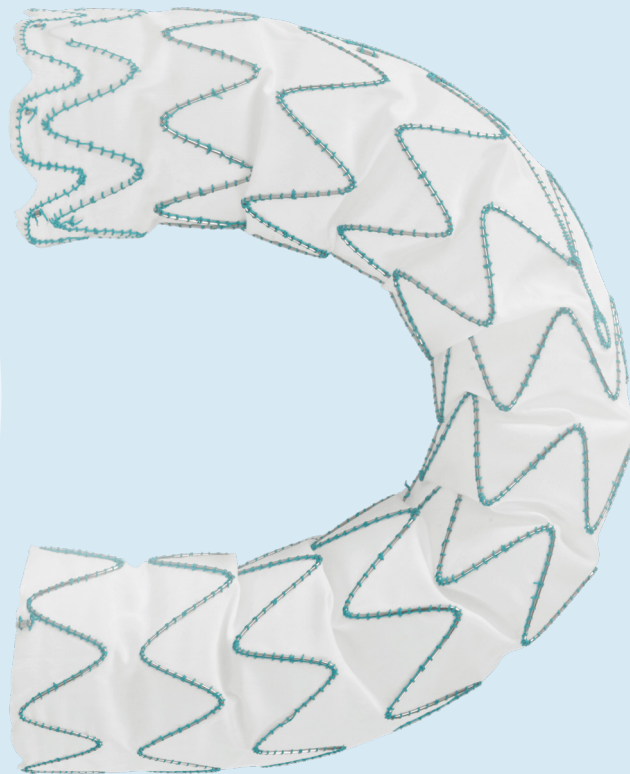


RELAY[®] PRO

THORACIC STENT-GRAFT SYSTEM

Uniquely Inspired
for Ideal Placement



For more information, visit
terumoaortic.com/features-benefits

Low Profile without Compromise

RelayPro's optimized weave pattern and radiopaque markers contribute to a **reduction in profile.**

Outer Diameter (OD): **19Fr – 22Fr** (23Fr for Non Bare Stent)

“3-4 French profile reduction of the new RelayPro is expected to offer operative advantages in terms of stent-graft introduction and deployment, particularly in patients with narrow or tortuous access vessels.”¹



73.5%
of patients treated in
USA with a percutaneous
femoral approach²

Based on US IDE Data²



WATCH ON VUMEDI
'RelayPro Thoracic Stent Graft - Features to Clinical Practice'

1. Riambau, V *et al*, 2019. Prospective multicenter study of the low-profile relay stent-graft in patients with thoracic aortic disease: the regeneration study. *Annals of Vascular Surgery*, 58, pp.180-189.
2. Szeto, W.Y *et al*, 2022. One-year results with a low-profile endograft in subjects with thoracic aortic aneurysm and ulcer pathologies. *The Journal of Thoracic and Cardiovascular Surgery*, 163(5), pp.1739-1750.

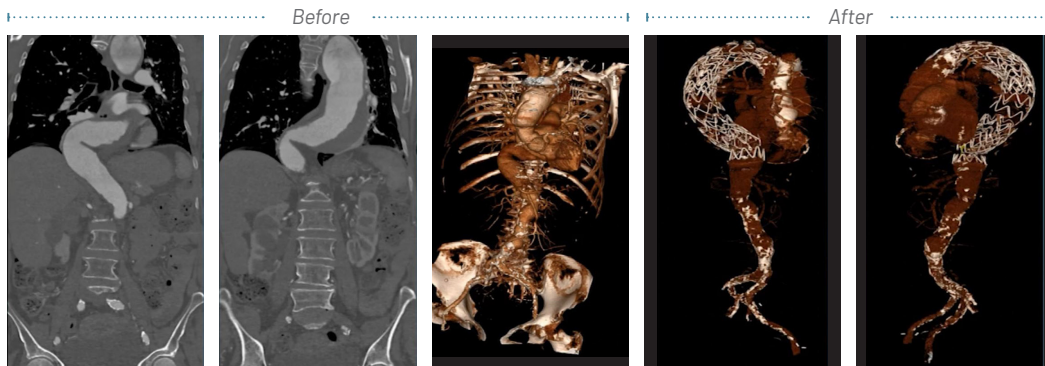
Ahead of the Curve with S-Bar Technology

Spiral Support Strut (S-Bar) is a nitinol curved wire to provide columnar strength to the graft and to enhance conformability by adapting to the natural curvature of the aorta.

The shorter RelayPro S-Bar builds on the proven RelayPlus longer S-Bar design described as:

“[...]an outer curved Nitinol bar (S-Bar) that allows for the gentle conformability of the device along the three-dimensional anatomy of the aortic arch [...]”³*

*In the US, the RelayPro is indicated only for use in the descending thoracic aorta.



Images provided courtesy of Hazem el Beyrouti, MD



WATCH ON VUMEDI

'Around the Entire Arch and on Label: RelayPro Performance'



Discover solutions for every segment of the aorta
terumoaortic.com



LinkedIn



VuMedi



X

