



RELAY[®] PLUS

THORACIC STENT-GRAFT SYSTEM

TERUMO
Aortic

Crafted for Precision

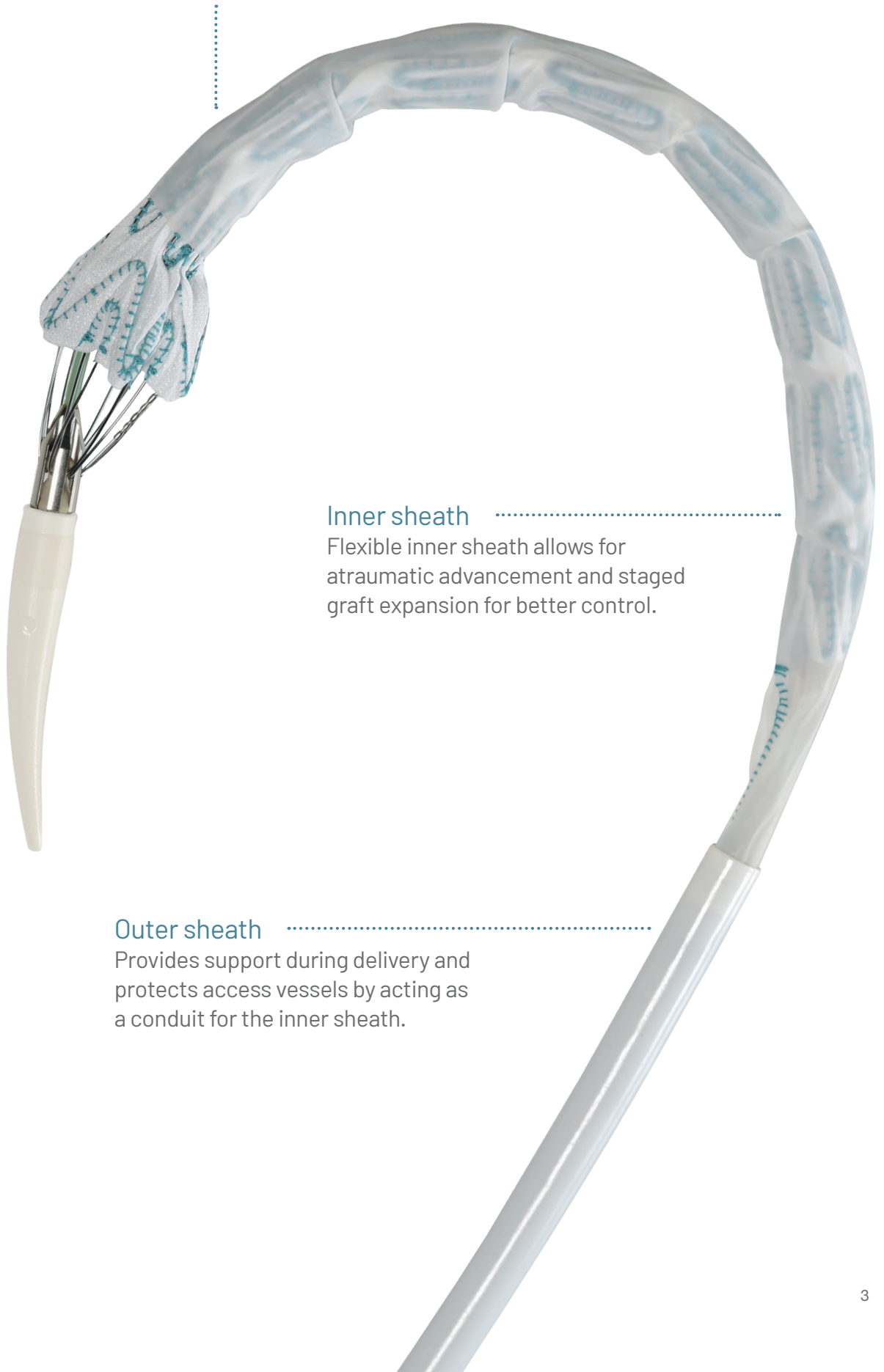
Inspired by the challenge to create a better solution for the thoracic aorta, Relay®Plus was specifically designed to:

- ▶ Respect the thoracic anatomy
- ▶ Consistently deliver predictable outcomes
- ▶ Provide clinicians with more confidence to treat their patients

The foundational technology in Relay®Plus enables the future of thoracic aorta solutions.

Nitinol pre-curved inner catheter

Tracking to the natural curvature of the aorta, the pre-curve self-aligns the S-Bar.



Inner sheath

Flexible inner sheath allows for atraumatic advancement and staged graft expansion for better control.

Outer sheath

Provides support during delivery and protects access vessels by acting as a conduit for the inner sheath.



Proximal clasp and alignment stent
Designed to work together, the proximal clasp provides for control while the varying lengths of the alignment stent help ensure accurate and perpendicular deployment.

Engineered together

The Relay®Plus system has been designed for maximum precision and control.

By designing Relay®Plus as a complete endovascular system, it enables predictable and consistent results.



Clinical Results

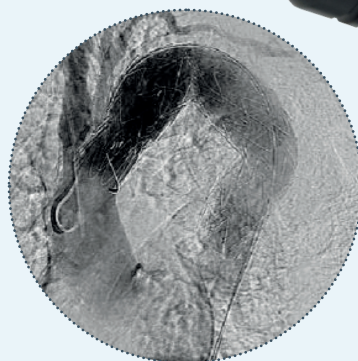
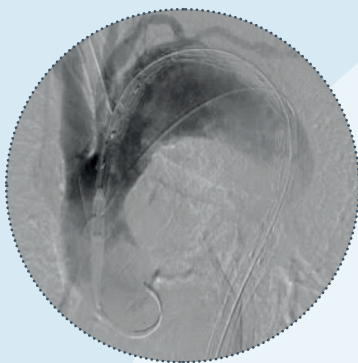
The Relay®Plus stent-graft and delivery system were specifically designed to work together to offer consistent outcomes.

RelayPlus IDE* 3-year follow-up results: ¹

- ▶ 100% Technical Success
- ▶ 2.6% Stroke
- ▶ 0% Type I/III Endoleak
- ▶ 0% Migration
- ▶ 7.9% Secondary Interventions
- ▶ 0% Fracture

RelayPlus PAS 3-year follow-up results: ²

- ▶ 100% Technical Success
- ▶ 2.2% Stroke
- ▶ 95.6% Freedom from TEVAR-related mortality
- ▶ 84.0% Freedom from all-cause mortality
- ▶ 97.2% Freedom from reinterventions
- ▶ 0% Fracture



* Data is for the subgroup of 38 subjects in the IDE and Continued Access cohorts that were RelayPlus

1. Farber MA, Lee WA, Szeto WY, Panneton JM, Kwolek CJ. Initial and midterm results of the Bolton Relay Thoracic Aortic Endovascular Pivotal Trial. *Journal of Vascular Surgery*. 2017;65(6):1556-1566.e1. doi:10.1016/j.jvs.2016.11.061
2. Malas M, Locham S, Hughes C, et al. Midterm outcomes in patients undergoing endovascular repair of thoracic aortic aneurysms and penetrating atherosclerotic ulcers using the RelayPlus stent graft. *Journal of Vascular Surgery*. 2021;73(2):459-465. doi:10.1016/j.jvs.2020.05.059

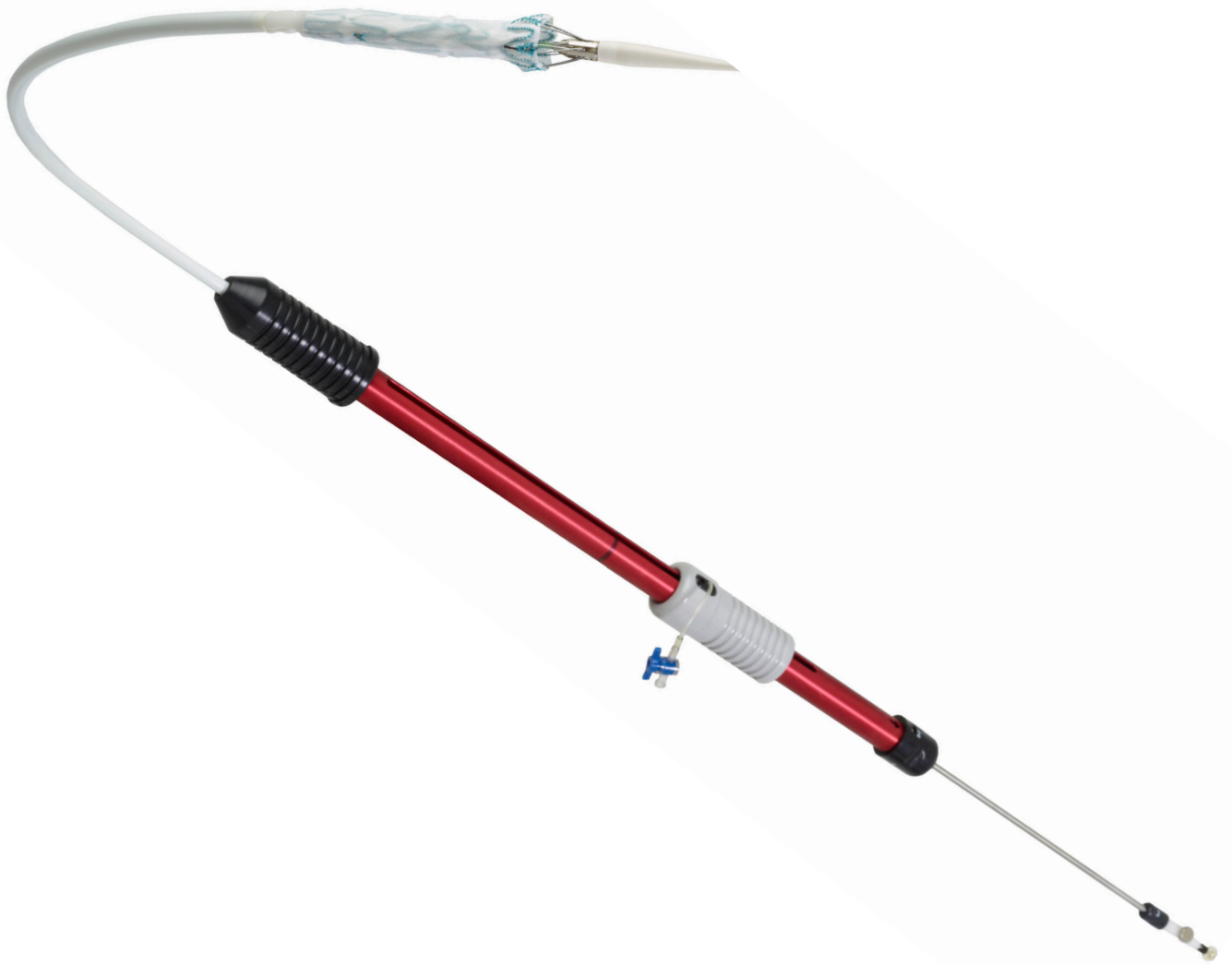
A more personalized approach

Relay®Plus has a wide range of sizes and tapers allowing each patient access to the right solution, every time.

Relay®Plus features:


- ▶ Lengths ranging from 100 to 250 mm
- ▶ Diameters ranging from 22 to 46 mm
- ▶ Tapered configurations on 150s, 200s, and 250s with diameter of 28-46 mm





terumoaortic.com

TERUMO
Aortic



At Terumo Aortic, we are 100% focused on
addressing every segment of the aorta,
from the aortic root to the iliacs.

terumoaortic.com

Discover solutions for every segment of the aorta

Please visit our website for more information on use, indications, contraindications, warnings/precautions and availability within your market.

 Manufactured by: Bolton Medical Inc, 799 International Parkway, Sunrise, Florida 33325, United States

Product availability subject to local regulatory approval.

USA_0216-A Oct22 • PM-06157

 **TERUMO**
Aortic